

# Cell

In memory of Nelson Rolihlahla Mandela

'Cell'

In Memory of Nelson Rolihlahla Mandela

Currently I work as an architect and artist, often in collaboration designing memorials and museums, and developing public art projects in South Africa my projects include:

Apartheid Museum

Freedom Park

Hector Pieterse Museum Soweto

Lilliesleaf Rivonia

Mandela House Visitor Centre Soweto

Mandela Capture Site Memorial in collaboration.

All of these projects have a strong relationship with the land, history and context.

In addition to the several 'nation building' projects I have built, I work on exhibitions which are currently touring the world, on the life and story of Nelson Rolihlahla Mandela, the latest called - 'Prisoner to President'.

'Cell'

This work consists of the precise measured dimensions of the space that Mandela was held in on Robben Island for 18 of his 27 year incarceration. It has been cast in solid concrete. The considered concrete texture embodies a sense of damage and expresses time. The confined space and expressed 'blocked-out' windows engage you emotionally and remind you of Mandelas' personal sacrifice for Freedom. The roof is removed to connect the cell with the sky, - to express freedom from confinement.

It was originally commissioned for the NIROX Sculpture Park Winter Festival in 2014 outside Johannesburg. It consists of an edition of 9 casts, and is best located in an isolated public space.

It is cast in situ in timber boards measuring 225mm x 50 mm exposing the concrete in its raw off shutter finish on release of the shutter.

This project is a universal symbol of courage.

Jeremy Rose, Johannesburg 2014

Attachments:

Construction drawings

Rendered cad drawings

Copy of Print

Photo of steel maquette

Photos of construction process



1/10 scale maquette showing opening to sky and window pushed in.



Cell after shutter removal.

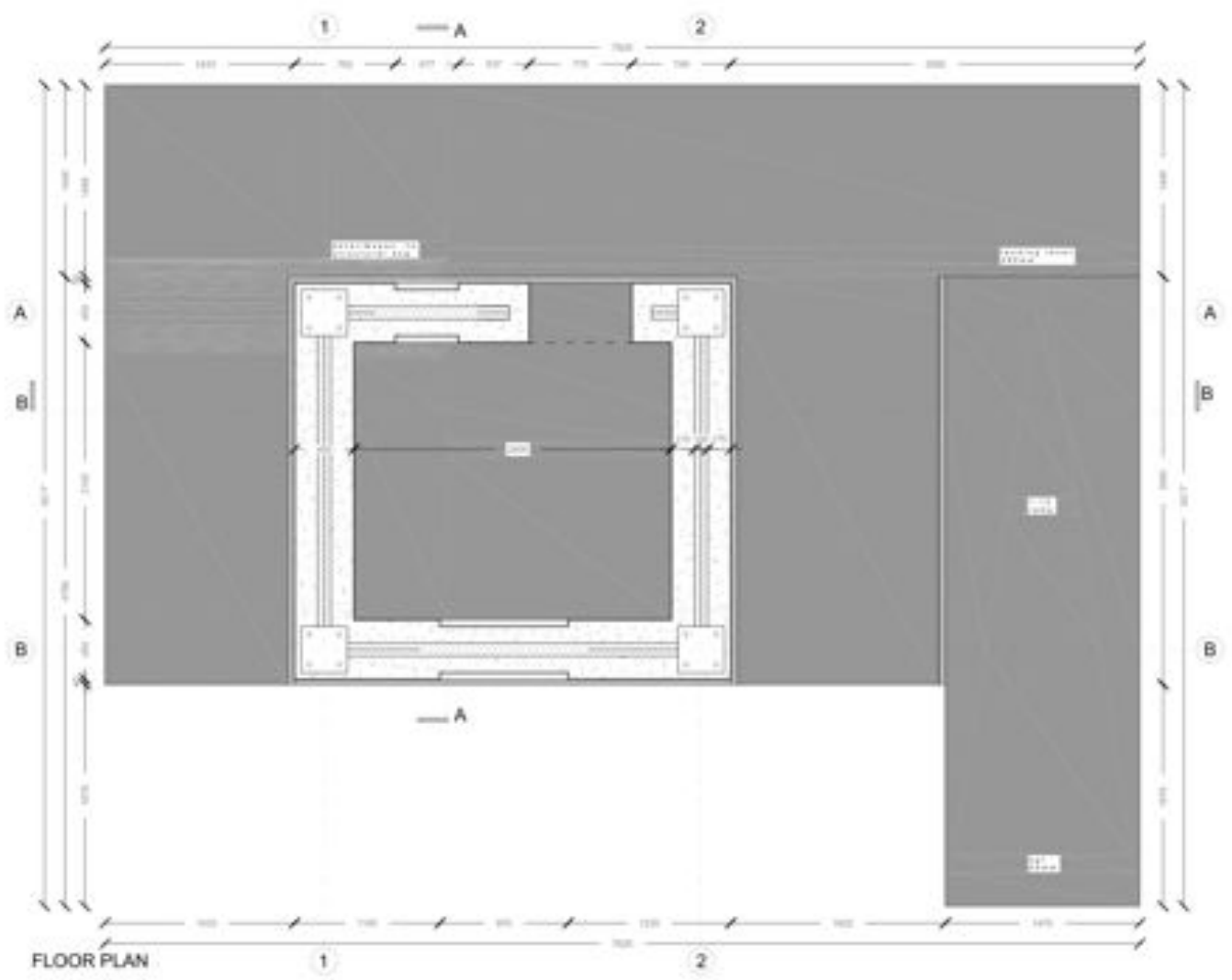


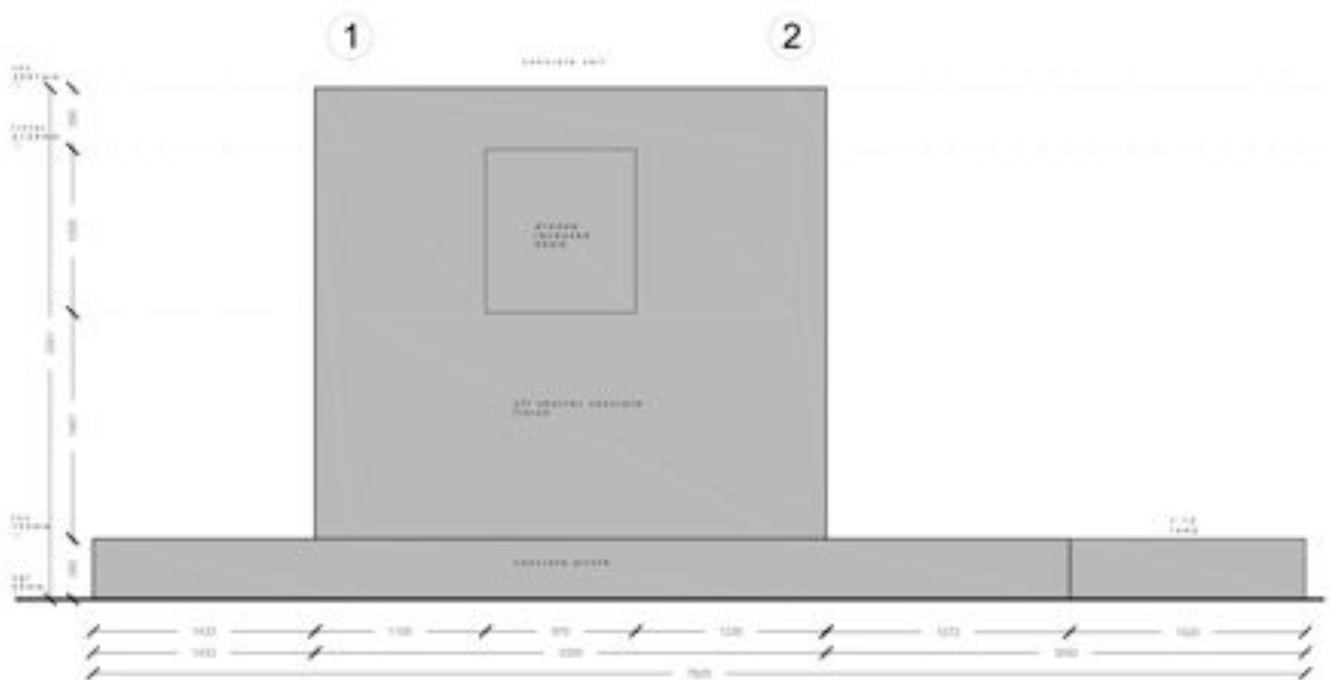
Copy of artist's print



Detail of 'blind' window.

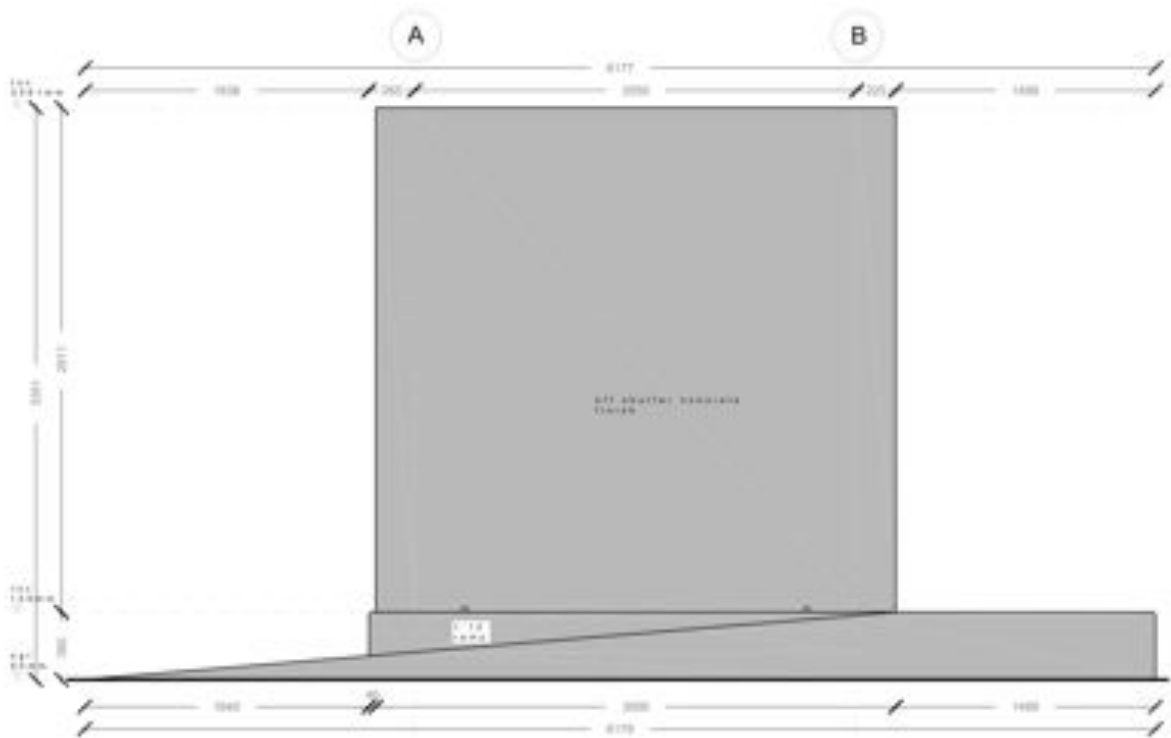
Measured Drawings



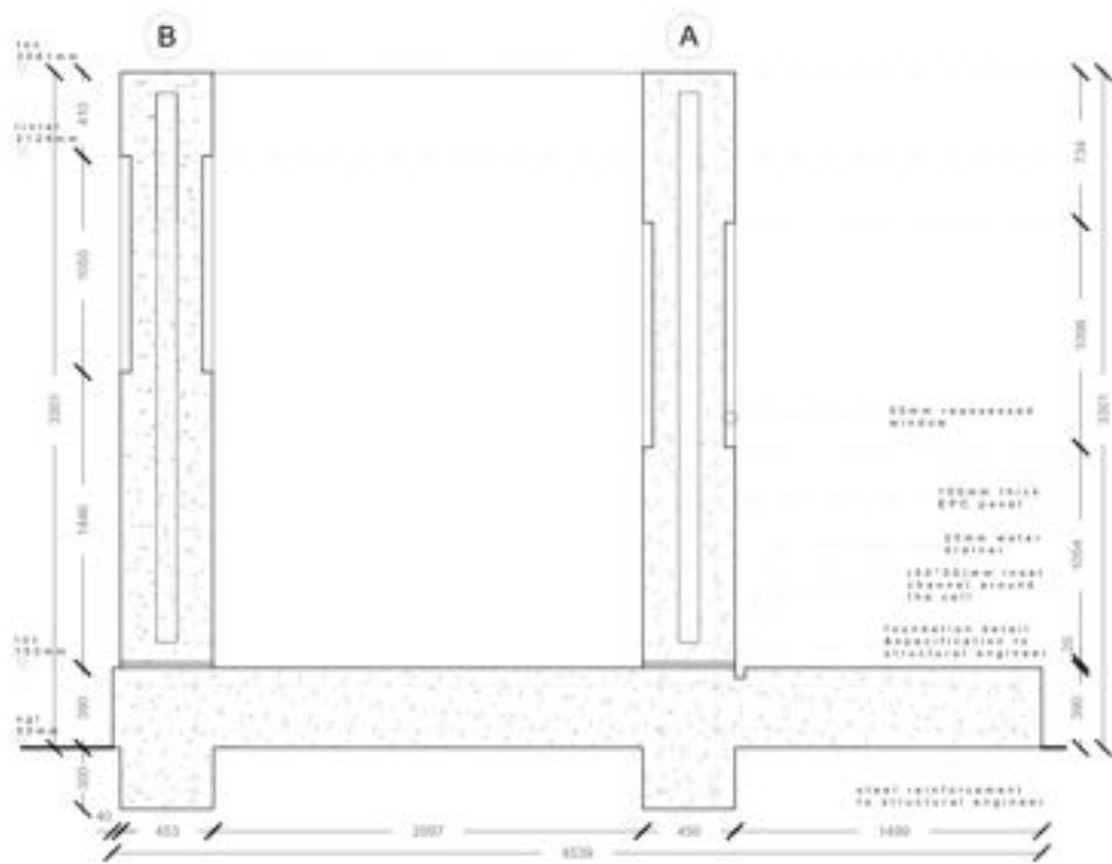


REAR ELEVATION





DE ELEVATION



SECTION A-A



**List of Editions**

Cell - 9 editions

Maquette – 27 editions

Prints – 27 editions